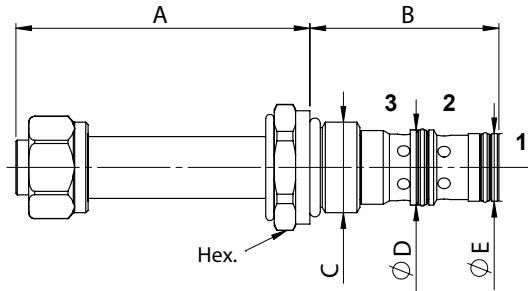
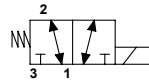


WTW - 02

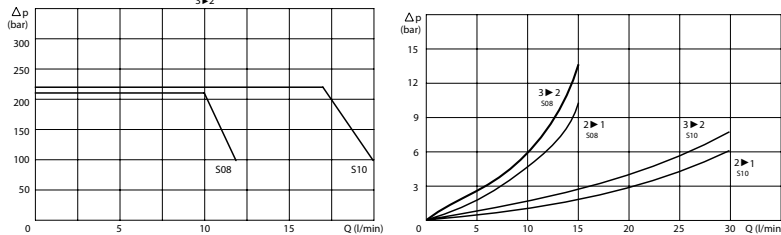
TECHNICAL DATA

- **Flow:** See table
- **Max working pressure:** See table
- **Materials:** Cartridge in Steel zinc plated
- **Version:** Spool Type - Direct Acting
- **Cavity:** See table
- **Installation torque:** See table
- **Weight:** See table

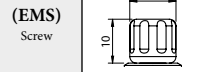


PORTS		
Size	S08	S10
DIMENSIONS		
A	61,8	82,9
B	39,7	45,8
C	3/4-16UNF	7/8-14UNF
D	15,8	17,4
E	14,2	15,8
Hex.	24	27
Max Pressure (bar)	210	210
Max Flow (l/min)	12	20
Cavity	FW3403000	FW7803000
Installation torque (Nm)	30	40
Weight (kg)	0,150	0,290

PRESSURE DROP CURVES



MANUAL OVERRIDE



ORDERING CODE

WTW

Ports Size:
- S08 = SAE 08/3
- S10 = SAE 10/3

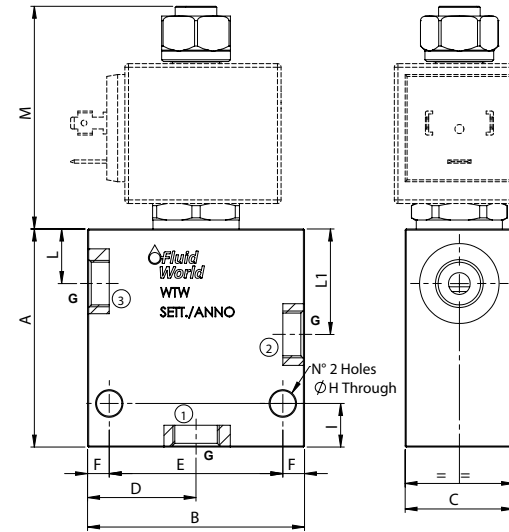
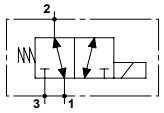
02

Manual Override:
- Omit if not required
- EMS = Screw

WTW - 02

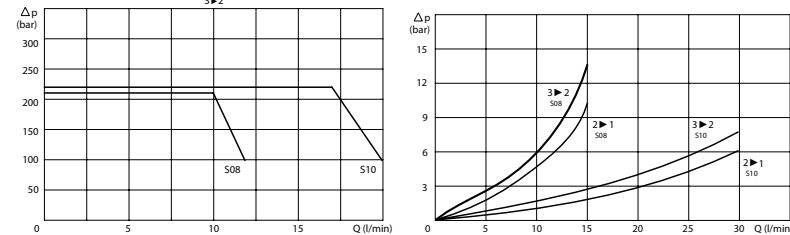
TECHNICAL DATA

- **Flow:** See table
- **Max working pressure:** 210 bar (210 bar)
- **Materials:** Aluminium Body (Steel body if required)
- **Version:** Spool Type - Direct Acting
- **Note:** 22W coil for S08 on the page 290
36W coil for S10 on the page 291

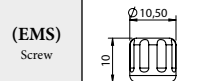


PORTS		
Size	S08	S10
G	1/4	1/2
	3/8	
DIMENSIONS		
A	60	65
B	60	60
C	30	35
D	30	30
E	46	48
F	7	6
H	7	7
I	12	7
L	15,5	18,5
L1	29,5	34,5
M	61,3	82,4
Max Flow (l/min)	12	20

PRESSURE DROP CURVES



MANUAL OVERRIDE



ORDERING CODE

WTW

Ports Size:
- S08 = SAE 08/3
- S10 = SAE 10/3

02

Manual Override:
- Omit if not required
- EMS = Screw

Ports Size:
- 1/4 ; 3/8
- 1/2

Material Body:
- Omit if Aluminium
- S = Steel

Rated Voltage Coil:
- Omit if not required
- 12
- 24