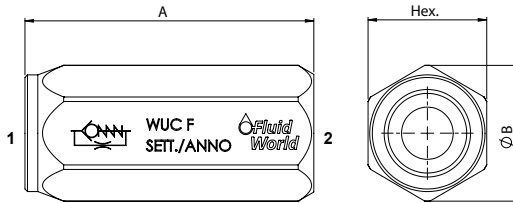
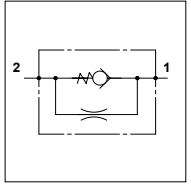


WUC F

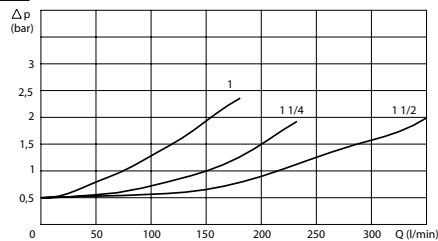
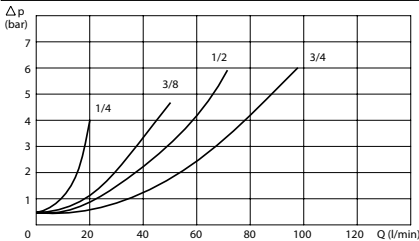
TECHNICAL DATA

- **Flow:** See table
- **Max working pressure:** 350 bar
- **Cracking pressure:** See table
- **Materials:** Steel Body
- **Weight:** See table
- **Note:** Only on request, please contact our sales department



PORTS							
1 - 2	1/4	3/8	1/2	3/4	1	1 1/4	1 1/2
DIMENSIONS							
A	55	65	75	86	105	135	145
B	21	27	31	40	47	63	69
Hex.	19	24	27	35	41	55	60
Max Pressure (bar)	350	350	320	300	300	300	300
Max Flow (l/min)	20	50	70	110	160	220	350
Weight (kg)	0,100	0,190	0,320	0,450	0,720	1,750	1,950
ORIFICE							
Ø Min (mm)	0,5	0,5	0,5	0,5	On Request		
Ø Max (mm)	2	3,5	4	4			

PRESSURE DROP CURVES



SPRINGS

Code	Cracking pressure bar
Standard	0,5
4	4
8	8

ORDERING CODE

WUC

F

Ports Size:

- 1/4 - 1
- 3/8 - 1 1/4
- 1/2 - 1 1/2
- 3/4

Opening Pressure:

- Omit if 0,5 bar
- 4 = 4 bar
- 8 = 8 bar

Throttling Hole:

- Value