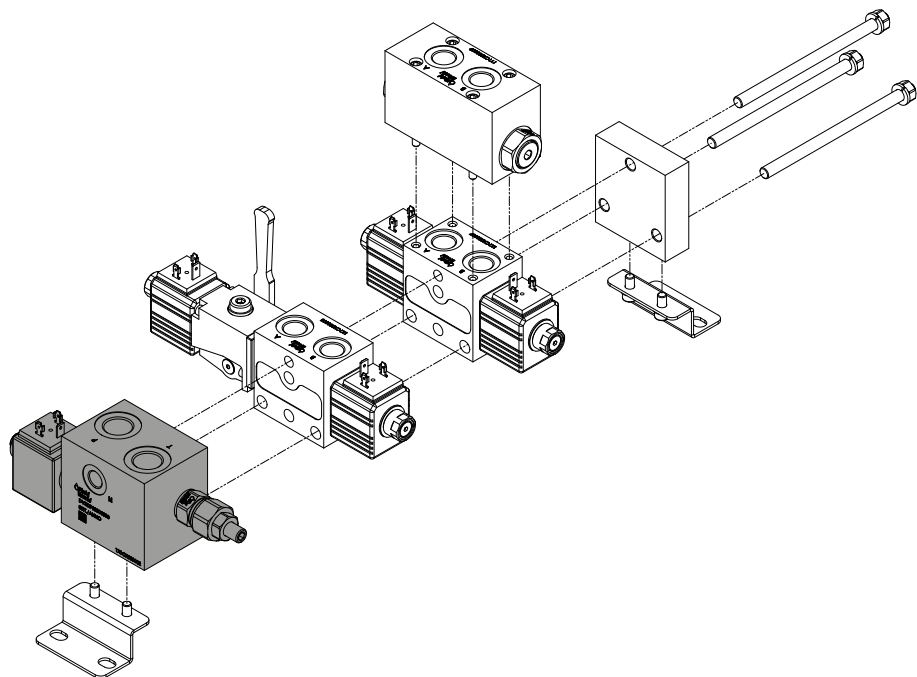


## A - INLET ELEMENTS



01	02	03a	03b	04	05a	05b	06	07	08	09a	09b									
IN	-	C3	-	G12	N	-	A	-	20	NSTD	-	NA	-	0000	-	V12	-	D	NN	/

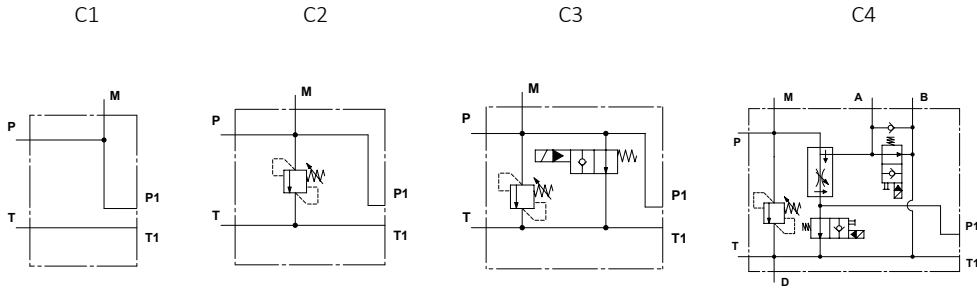
<b>01</b>	<b>Inlet elements</b>	IN
<b>02</b>	<b>Application scheme:</b> Basic (only connections) With pressure relief valve With pressure relief valve and electric unloading valve With compensated flow control valve, pressure relief valve and electric unloading valve	<b>pag. 332</b> C1 C2 C3 C4
<b>03a</b>	<b>Ports:</b> P e T G3/8 - M G1/4 (DIN 3852) P e T G1/2 - M G1/4 (DIN 3852)	- G38 G12

## A - INLET ELEMENTS

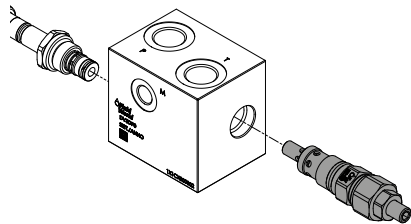
<b>03b</b>	<b>Option corking:</b> P, T e M open P e M closed, T open T e M closed, P open P, T e M closed	- N P T C
<b>04</b>	<b>Material:</b> Aluminium Steel zinc plated	- A S
<b>05a</b>	<b>Main pressure relief valve:</b> (Omit for C1) Range 5-55 Range 25-110 Range 50-215 Range 100-350 Plug (without pressure relief valve)	<b>pag. 332</b> 05 10 20 35 00
<b>05b</b>	<b>Setting pressure relief valve:</b> (Omit for C1) Standard adjustment Adjustment required Adjustment required with safety plug Plug (without pressure relief valve)	<b>pag. 332</b> NSTD N(XXX) T(XXX) NTAP
<b>06</b>	<b>Electric unloading valve:</b> (Omit for C1 and C2) Normally open Plug (without electric unloading valve)	- NA TS
<b>07</b>	<b>Option electric unloading valve:</b> (Omit for C1, C2 and choice plug in 06) Without emergency NA with push emergency NA with push&twist emergency	<b>pag. 333</b> 0000 EMPO EMPT
<b>08</b>	<b>Coil:</b> (Omit for C1, C2 and choice plug in 06) 12 Vdc 24 Vdc No coil	<b>pag. 333</b> V12 V24 BBO
<b>09a</b>	<b>Coil connector:</b> (Omit for C1, C2 and choice plug in 06) DIN EN 175301-803 (ex. DIN 43650) DT04-2P AMP-JUNIOR No coil	<b>pag. 333</b> D T J B
<b>09b</b>	<b>Option coil:</b> (Omit for C1, C2 and choice plug in 06) No connector With connector With connector and bidirectional diode No coil	<b>pag. 333</b> NN NC SC B0

## A - INLET ELEMENTS

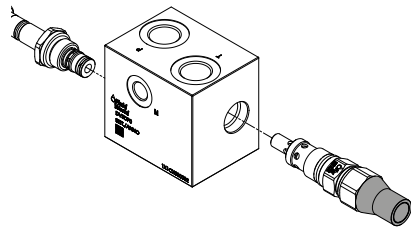
**02** Application scheme:



**05** Main pressure relief valve: (Omit for C1)



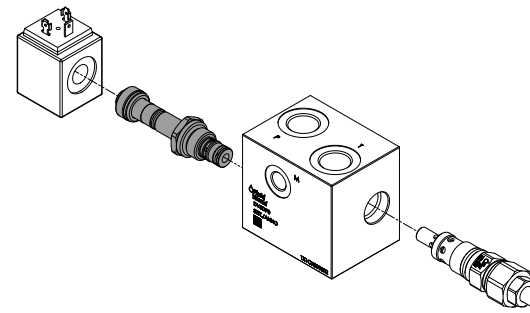
SPRINGS			
Code	Adjustable pressure range bar	Pressure increase bar/turn	Standard setting bar
05	5-55	15	5
10	25-110	25	25
20	50-215	50	50
35	100-350	90	100



(option)  
T  
Adjustment required with safety plug

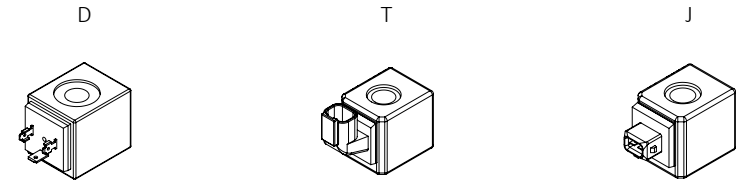
## A - INLET ELEMENTS

**07** Option electric unloading valve: (Omit for C1, C2 and choice plug in 06)



MANUAL OVERRIDE	
(EMP) Push	
(EMPT) Push & Twist	

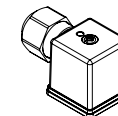
**08** **09** Coil: (Omit for C1, C2 and choice plug in 06)



COIL CHARACTERISTICS					
Vdc	Average power	Resistance	Protection IEC 144	Insulation	Nominal Voltage
12	22	6,5	IP 65	Class H	+/- 10%
24		26,5			

**09b** Coil connector: (Omit for C1, C2 and choice plug in 06)

Option Connector

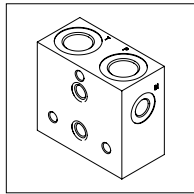


Option bidirectional diode  
(hydraulic scheme)

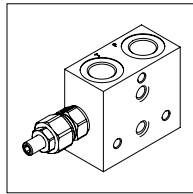


## A - INLET ELEMENTS

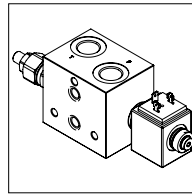
## A - INLET ELEMENTS



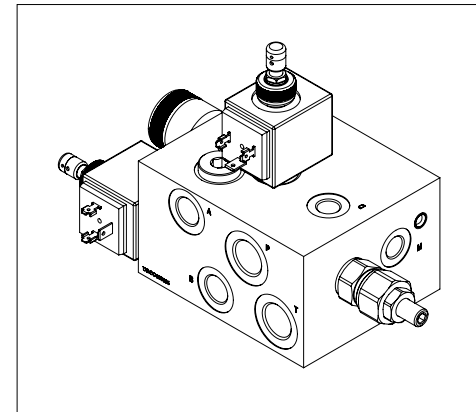
C1



C2

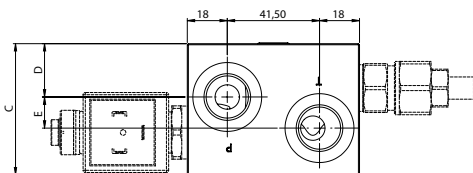
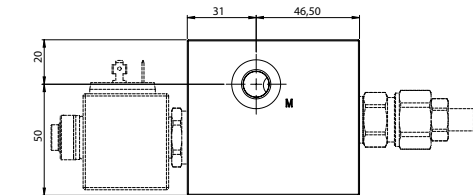
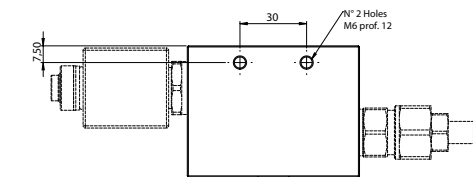
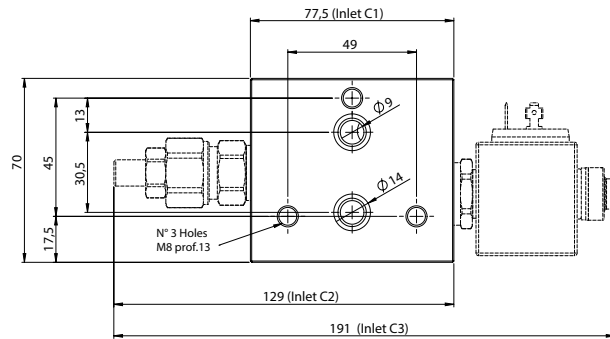


C3



C4 inlet element

General external dimensions of Inlet elements.



INLET DIMENSIONS		
	C1 and C2	C3
C	39	59
D	19,5	24
E	-	14

